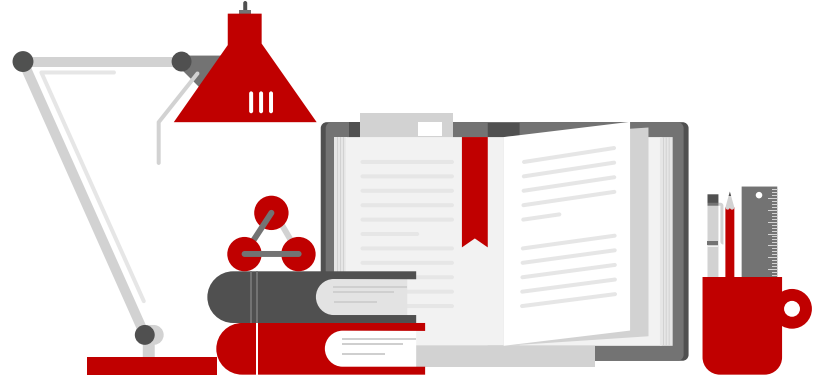


Interdisciplinary BSc Honours Programmes

Information session 24 September 2024

Marie van der Gaag
Erasmus Honours Academy

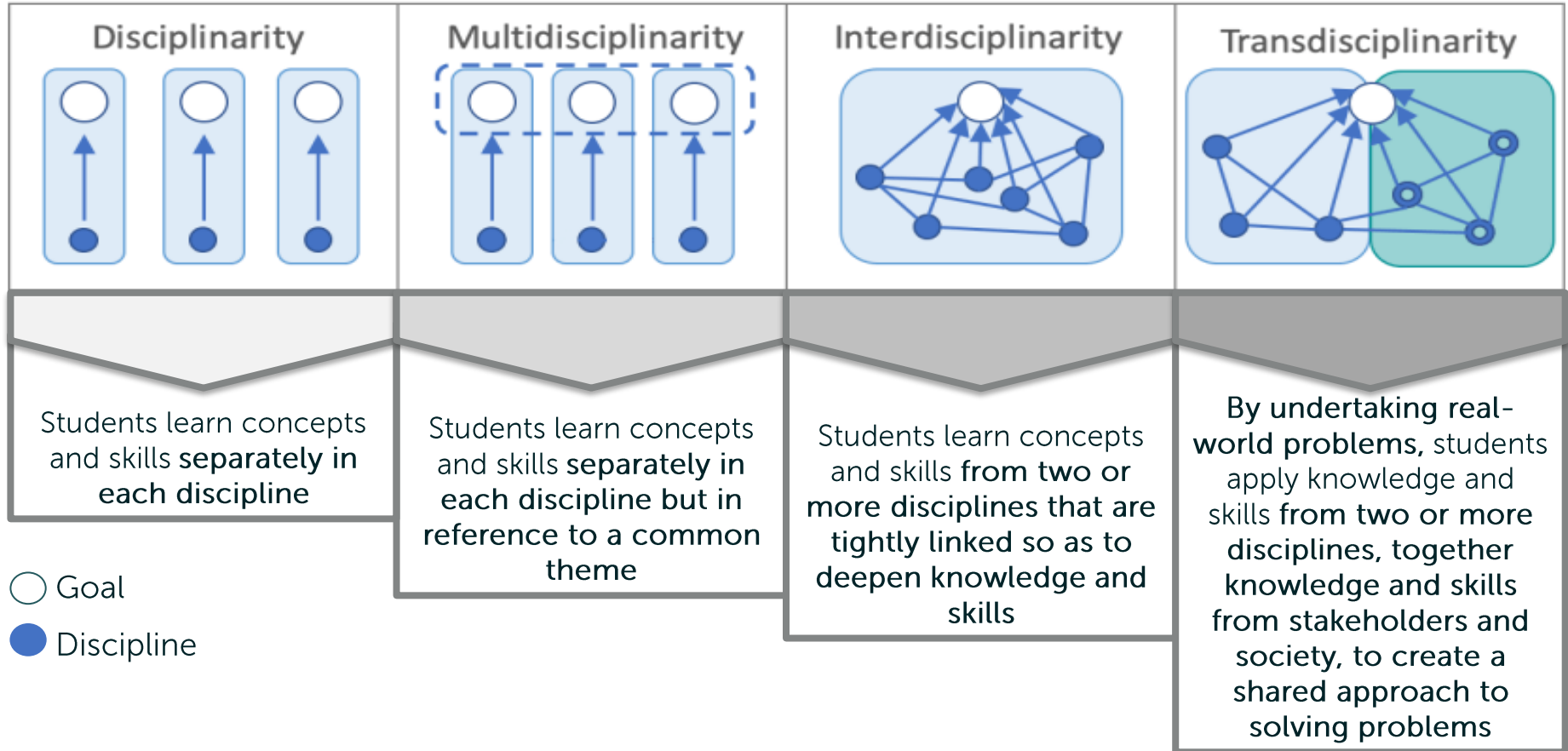


Erasmus

Programme for today

- What does interdisciplinary mean and why is it important?
- Overview Grand Challenges (EUR) programme
- Overview Space & Society (LDE) programme
- Overview Sustainability (LDE) programme
- Comparing the three programmes
- Applying for an Honours programme
- Your questions

What does interdisciplinary mean?



Why do we offer interdisciplinary programmes?

- The challenges we face in the world currently cannot be solved by mono-disciplinary teams.
- Get you out of your comfort zone by learning from other students and professors from other disciplines.
- It gives you the knowledge and the vocabulary to understand other disciplines, so you can build communication skills across disciplines.
- Interdisciplinary studies keep the door open to diverse career paths in science and in the industry.



Erasmus

Grand Challenges

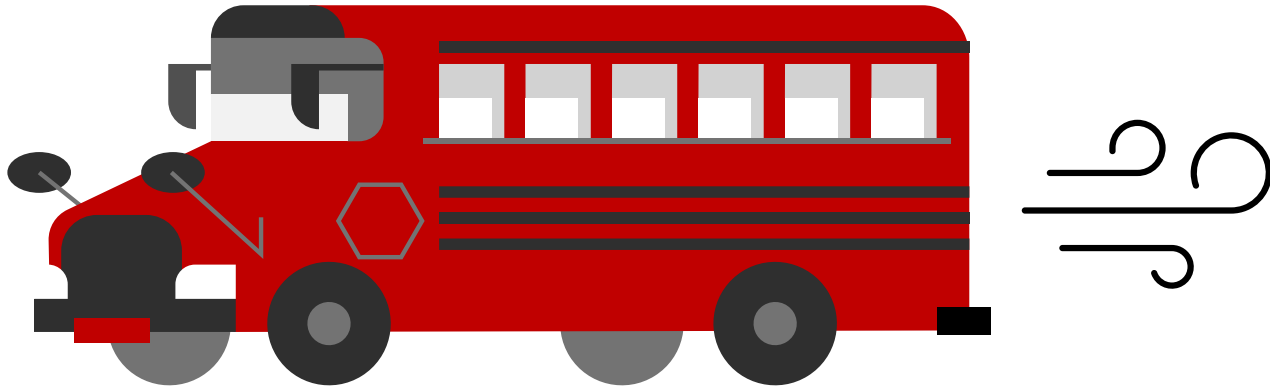
Erasmus University Rotterdam (EUR)

Academic Director: Friso van Houdt

Grandchallenges@eur.nl

Practical aspects

- Programme for 30 second year and third year students with diverse academic backgrounds.
- Programme runs from mid-January until early July.
- Extracurricular 15 EC workload.



Erasmus

Theme

The Grand Challenges is a value-based programme that focuses on rethinking the concept of sustainability. We hear the word almost every day, how does it manifest in our lives and environment? And what can we do about it?

This year we focus on reimagining (un)sustainable landscapes, by exploring alternative ways of navigating (knowing, feeling, sensing, acting in) the world.

We challenge students to open up and embody new perspectives, radically collaborate, map complexity, design for alternative futures and experience the interconnectedness of human and more-than-human life.

The Erasmus logo is a stylized, handwritten-style signature in a light blue color, located in the bottom right corner of the slide.

Teaching format

- Experimental programme with a combination of seminars and workshops with multi-/interdisciplinary teaching staff and group work on Tuesday evenings (18:30 – 21:00) – every week.
- Rooted in Rotterdam - excursions will be offered to engage with the city to deepen our understanding of contemporary challenges. Some of these excursions will be done in the daytime.
- The programme consists of a research phase and a design phase. Assessment (pass/fail) is based on analysis of the topic, group process and courage to experiment during your project. You will finish the programme with a personal reflection on your development, your work in the group and how you move forward after the programme.

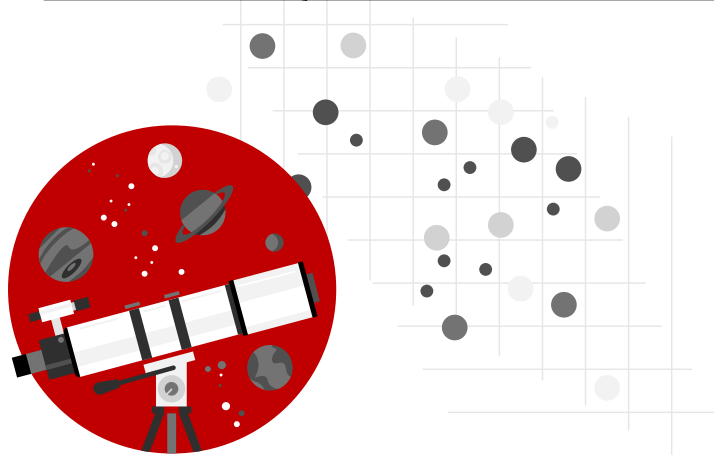
The Erasmus logo is a stylized, handwritten-style signature in a teal color, located in the bottom right corner of the slide.



Space & Society

Collaboration Leiden University,
TUDelft, Erasmus University Rotterdam and LDE
Centre Space for Science and Society.

Programme coordinator: Dimitra Stefoudi
d.stefoudi@law.leidenuniv.nl



Universiteit
Leiden
The Netherlands



Erasmus
University
Rotterdam



Practical aspects

- Extracurricular programme for second and third year students
 - 30 students, 10 from each university
- Programme runs from mid-November until end-June
 - Weekly sessions on Wednesday evenings (19:00 – 21:00)
 - Alternating locations in Leiden, The Hague, Delft & Rotterdam
- Extracurricular 15 EC workload



Theme

In this programme you will gain fundamental knowledge on space and develop practical skills by addressing multi-faceted space projects.

You'll get an in-depth understanding of how space can contribute to technology, society, and sustainability!

- Two courses
 - Fundamentals (7 EC)
 - Challenges (8 EC)



Teaching format

Fundamentals (7 EC)

- Teachers from Leiden, Delft and Erasmus, each with their own expertise, work together to give you an interdisciplinary curriculum
- You will learn i.a. about

- Advancements in space exploration
- Various applications of space technology
- The basics of space engineering
- Examples of business opportunities in space
- Innovation and commercialization in the space sector
- The regulation of space activities, incl. examples of laws from different countries
- Space policy and the governance of space



Teaching format

Challenge (8 EC)

- Work on a real-world Space Challenge
- Take on a challenge designed based on a multi-faceted space project
- Learn how to combine knowledge and skills from the different space disciplines
- Provide solutions that can shape the evolving space sector



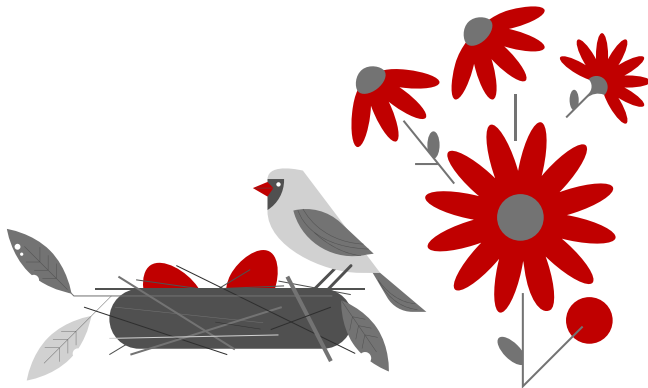
Sustainability

Collaboration between Leiden University, TUDelft, Erasmus University Rotterdam (LDE) and the LDE Centre for Sustainability.

Programme coordinator: Esther van der Ent
LDEHonoursSustainability@cml.leidenuniv.nl



**Universiteit
Leiden**
The Netherlands



**Erasmus
University
Rotterdam**



Practical aspects



- Extracurricular programme for second and third year students
 - 45 students, 15 from each university
- Programme runs from mid-November until end-June
 - Weekly sessions on Tuesday evenings (19:00 – 21:00)
 - Alternating locations in Leiden, The Hague, Delft & Rotterdam
- Extracurricular 15 EC workload

Theme of Sustainability (LDE)

Gain fundamental knowledge & tools on sustainability and develop practical skills by addressing and solving a real-world sustainability challenge.

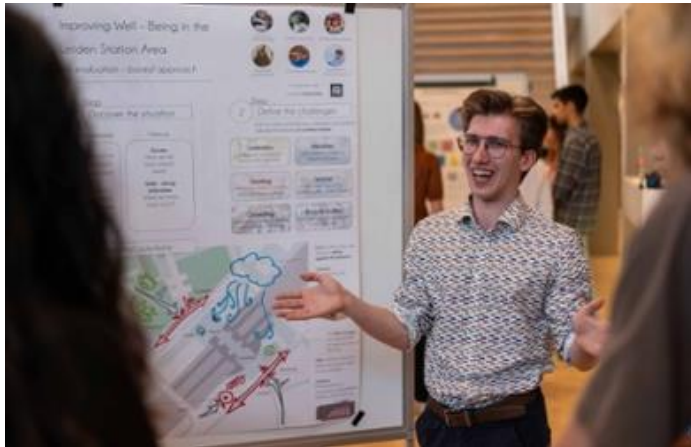
You'll get the knowledge and tools to make a contribution towards a sustainable society!

- Two courses
 - Fundamentals (5 EC)
 - Challenges (10 EC)

Teaching format

Fundamentals (5 EC)

Teachers and guest lecturers from Leiden, Delft and Erasmus, each with their own expertise, work together to give you an interdisciplinary curriculum, e.g.



- Sustainability as a scientific field
- Systems thinking on sustainability
- Sustainable AND just transitions and how to accelerate them
- Social change
- (Global) governance processes around sustainability issues
- Debate how we can accelerate global sustainability transitions
- Design methods and stakeholder engagement in addressing sustainability challenges

Teaching format

Challenge (10 EC)

- Real-world Sustainability Challenge
- Take on a challenge provided by regional stakeholders from across public, private or civic spheres.



The Hague



Ministerie van Financiën



Green Business Club
Den Haag
Beatrixkwartier



provincie **HOLLAND**
ZUID



Leiden



HagaZiekenhuis



Rijksdienst voor Ondernemend
Nederland



Resemblances between the three programmes

- Working together with students from different programmes.
- English taught programmes.
- Programmes are all in the evenings and the workload is above your normal curriculum.
- We expect commitment to the programmes, including working in groups, hence we are looking for open-minded, engaged students who are excited about challenging themselves.



Grand Challenges (EUR)	Space & Society (LDE)	Sustainability (LDE)
Reimagining sustainability in Rotterdam from a regenerative perspective	Approach Space from the strenghts of Erasmus University, TUDelft and Leiden University together	Approach Sustainability from the strenghts of Erasmus University, TUDelft and Leiden University together
30 students from all EUR schools	30 students from 3 universities, 10 students from all EUR schools	45 students from 3 universities, 15 students from all EUR schools
Runs mid-January until early July	Runs mid-November until end-June	Runs mid-November until end-June
All sessions in Rotterdam (with possible exceptions for excursions)	Sessions divided over Leiden, The Hague, Delft and Rotterdam	
Final product is an experimental design	Final product is a project with a societal stakeholder	
Sessions on Tuesday evenings	Sessions on Wednesday evenings	Sessions on Tuesday evenings
Available for second- and third-year students		
Approximately a GPA of 7.5 required		

Applying to the programmes

Grand Challenges (EUR)	Space & Society (LDE)	Sustainability (LDE)
<ul style="list-style-type: none">Application deadline 22 October 23:59.	<ul style="list-style-type: none">Application deadline 6 October 22:00.	
<ul style="list-style-type: none">Selection based on personal <u>motivation</u> for the topic, GPA and study-background diversity of the group.		
<ul style="list-style-type: none">Students will be informed by 27 November 2024.	<ul style="list-style-type: none">Students will be informed by 11 October.	

You are allowed to apply to all programmes (but not attend more than one programme), and you will know whether you have been enrolled in the LDE programme before the application deadline of the EUR programme.



What is in it for you?

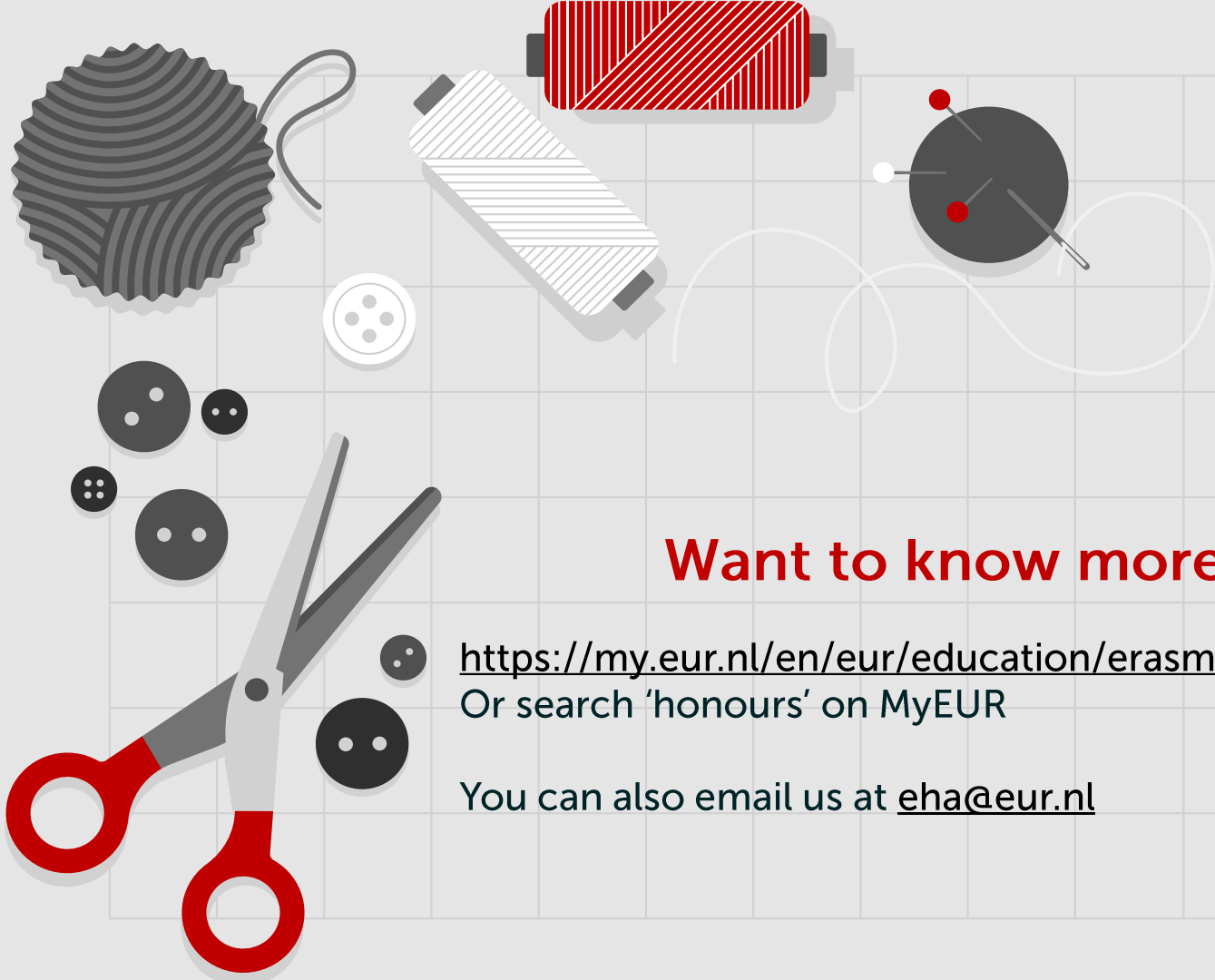
- Meeting peers, scholars and practitioners with different backgrounds
- Enriching your study experience by developing skills, knowledge and attitudes not taught in your own bachelor programmes
- Having experiences outside of the traditional university classroom and the opportunity for you to create something of value for others
- Honours certificate of 15 EC extracurricular credits
- Enrolment in the Erasmus Honours Alumni Network - HonEURs



Erasmus

Conditions for success and enjoyment of an honours programme

When to apply	When <u>NOT</u> to apply
When you're commit creating space, time and energy for an intensive programme. You are able to schedule study hours flexibly outside of the sessions (4-6 hours per week).	When your agenda is full of other extracurricular commitments or travelling in the evenings is an issue.
When you're curious exploring new perspectives and reflecting on your own perspective.	When you want to deepen your disciplinary knowledge.
When you're excited about learning with and from others.	When you want excel individually.
When you're in it to develop yourself and feel responsible for contributing to the experience of your peers.	When you're in it to build your CV.
When you are open minded towards dealing with complexity, uncertainty and frustration.	When you expect you are given easy, straightforward answers and/or solutions to societal problems.
When you want to actively shape your education and learning journey.	When you want to passively consume your education.



Want to know more?

<https://my.eur.nl/en/eur/education/erasmus-honours-academy>
Or search 'honours' on MyEUR

You can also email us at eha@eur.nl

Questions?
EHA@eur.nl



Erasmus