

University Delivery Qualification

The University Delivery Qualification (UDQ) is a new trajectory that focuses on basic didactic skills for beginning teachers and tutors. With the University Delivery Qualification, participants can complete the Delivery part of the UTQ and receive a Nationally acknowledged certificate.

During the trajectory we will ask the participants to apply the materials in their own educational practice, therefore only those who are currently teaching can follow the trajectory. The application is important to ensure that the participants will improve their own educational practice. The trajectory provides insight in the teaching skills of your teachers/tutors.

What does the trajectory look like?

1



3 training sessions

- Three half-a-day sessions focusing on the basic didactics of teaching
- Blended set-up
- Peer learning
- Practicing with a mini-lecture

Day 1

- Learning objectives
- Motivation (ARCS)
- Active learning

Day 2

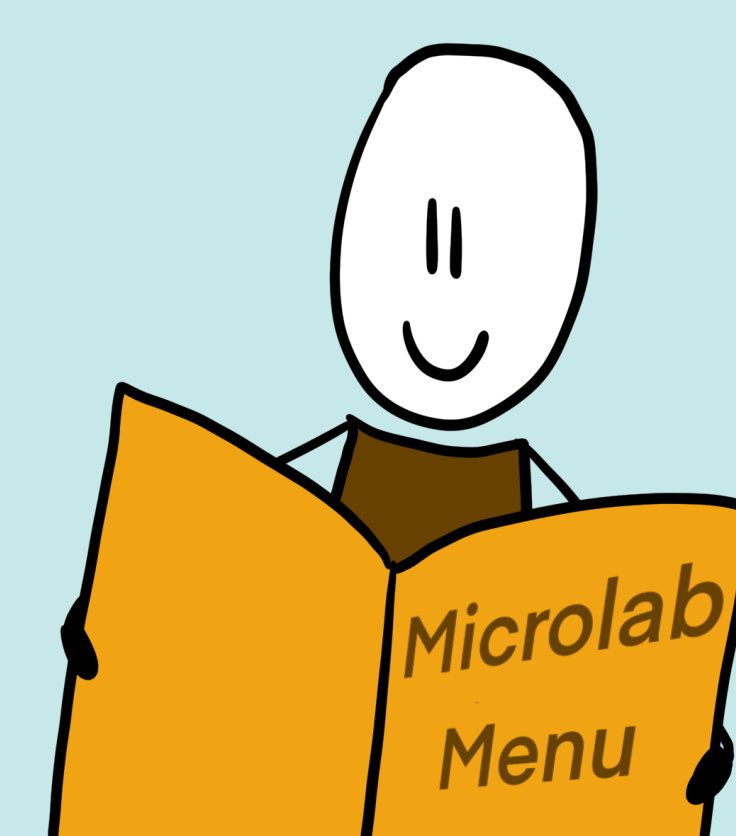
- Prior knowledge
- Target group analysis
- Public speaking

Day 3

- Presenting a mini-instruction
- Lesson plan

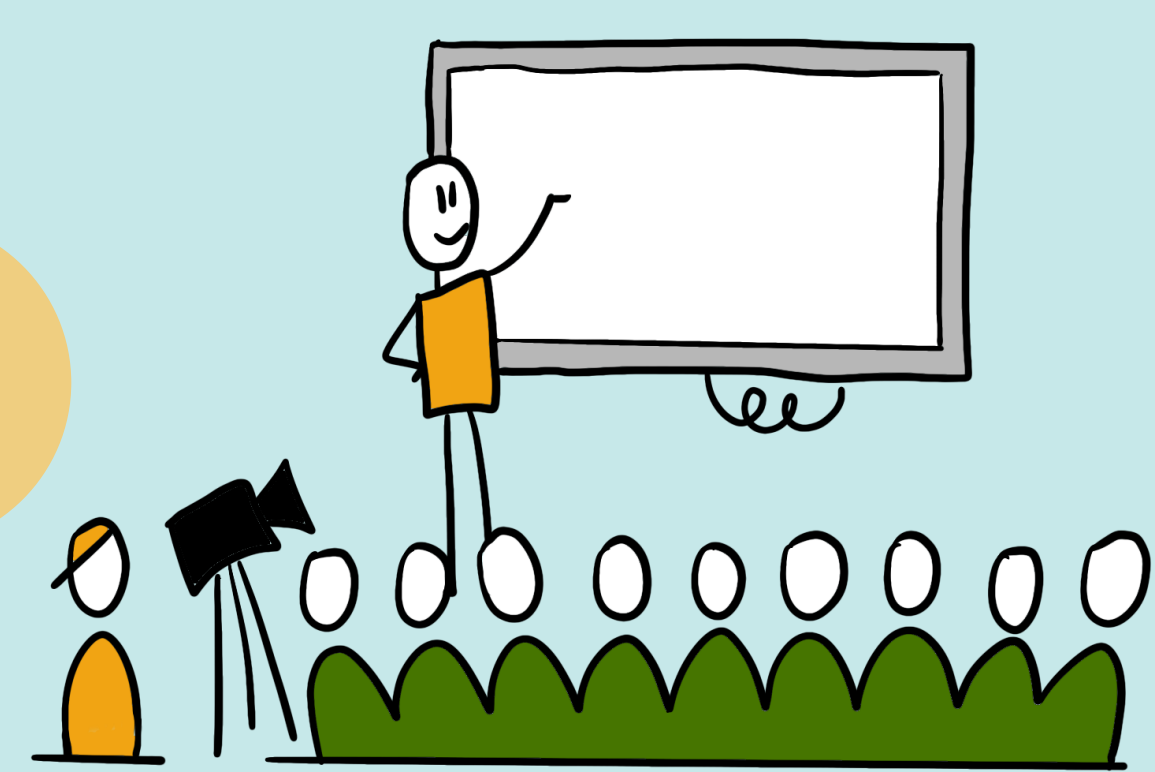
MicroLab

MicroLabs are developed in collaboration with the Community for Learning and Innovation. Within the trajectory we offer a choice between two MicroLabs, namely: "how to supervise students" and "How to manage group dynamics in the classroom".



2

3



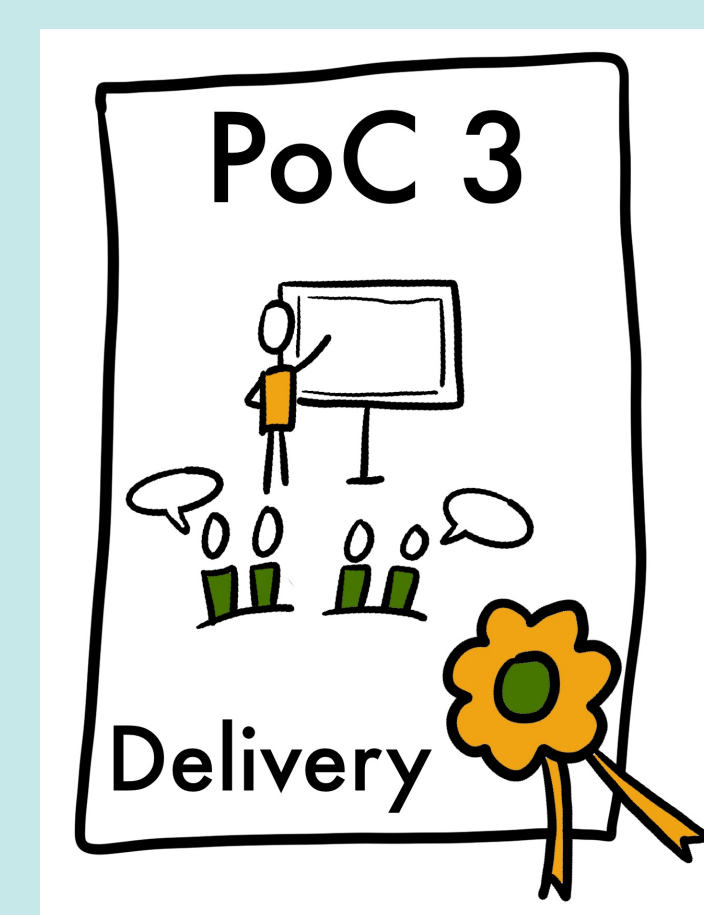
Observation

After completing the sessions and the MicroLab, an educational trainer from Risbo will observe an actual class from the participant. They plan a meeting where the educational trainer provides feedback to the participant.

Proof of Competence

The proof of competence consists of:

- Target group analysis
- Lesson plan
- Observation
- Proof of supervising students' activities



4

5



Inspiration session

In this session the participants share their lessons learned and what they've applied in practice. Last but not least, it's a festive moment as it concludes the trajectory, and the certificates can be awarded.

For more information contact training@risbo.eur.nl