

Educational Vision

Erasmus University Rotterdam



Erasmus University is an internationally oriented, research-intensive university aiming to create positive societal impact with her education, research, and engagement activities. Our university has an international outlook while firmly rooted in the Rotterdam region.

Educational Vision Erasmus University Rotterdam

Society is faced with many societal needs and urgencies, for instance relating to climate change, inequalities, and the consequences of economic shifts, technological developments, and demographical changes. The complexity of these socio-economic and sustainability urgencies challenges us to create opportunities for an interdisciplinary environment for research and learning that generates positive impact.

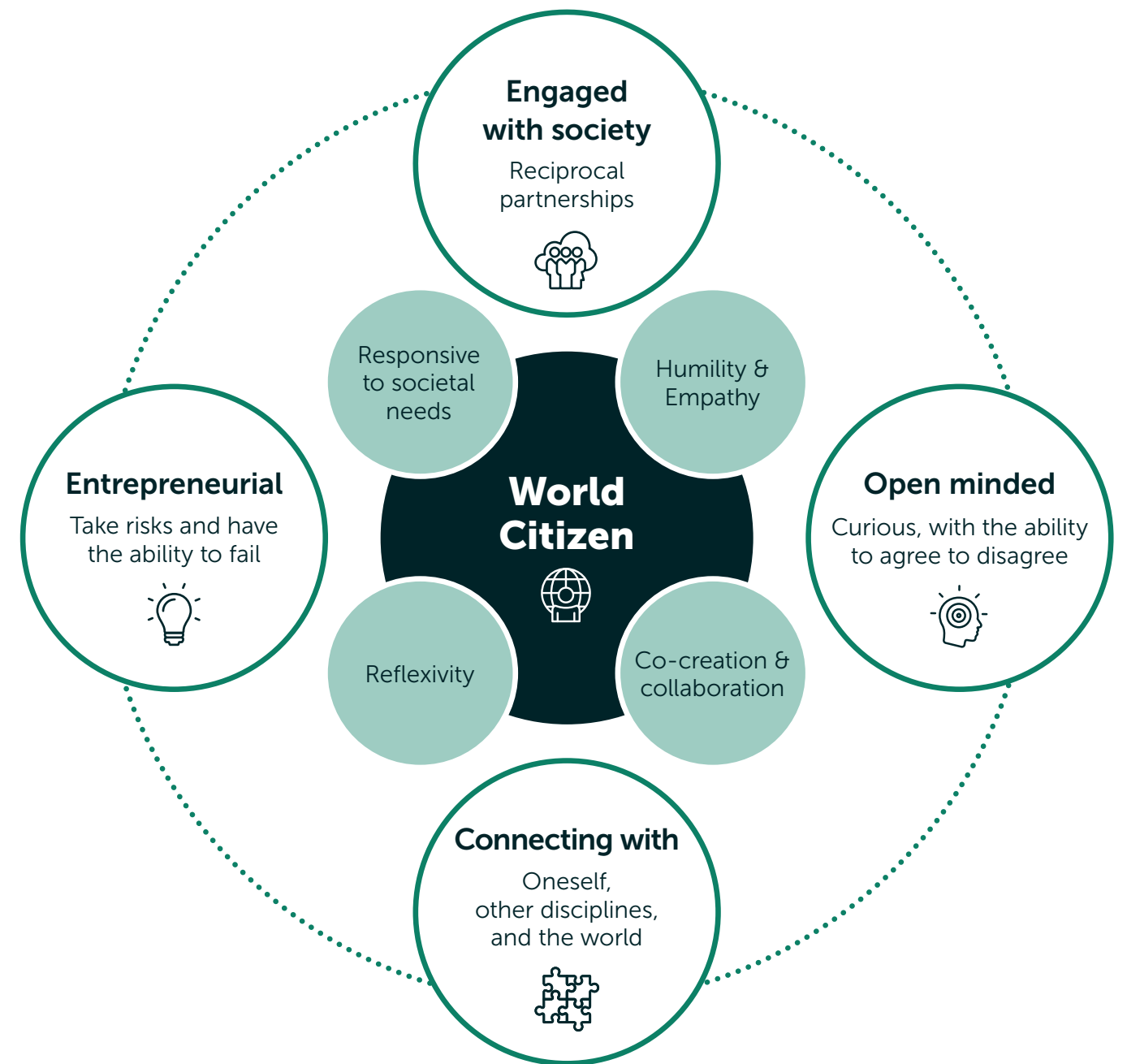
To create impact with our education, we address global and local societal needs and urgencies in all our programmes. Students are educated to become experts in their chosen discipline and/or in a multidisciplinary field of work, to develop a broad perspective on these societal urgencies. Impact-driven education enables students and teachers to apply and give meaning to the Erasmian value of being a 'world citizen'.

Our Erasmian Education builds students' capacity

We focus on student success. This entails both enhancing study success in the sense of academic achievement and the personal development and well-being of students. We support students in building their personal and professional (academic) identity and expect students to take responsibility for their learning process. They can co-create knowledge with partners from other disciplines, cultural backgrounds, and partners from society. Students are taught to critically reflect on their own assumptions and to be aware of the strengths and limitations of those assumptions. They can build and maintain reciprocal relationships; understand the 'other'; and contribute to a shared understanding of and sustainable approaches to societal needs and urgencies.

Our Erasmian Classroom is inclusive

At Erasmus University, we reach out to, support, and retain students, faculty and staff to create a diverse and inclusive classroom. We strongly contest implicit and explicit barriers that prevent equal access to our academic community and meaningful participation therein. We specifically reach out to our local communities to encourage first generation academic students and all students that might feel distanced to study at Erasmus University. International students are important members of our community since they represent our global context. We are a community that is open-minded and that allows everyone to speak freely and express ideas and opinions, in a respectful way. Though uncomfortable at times, everyone is encouraged to participate and come to new understandings. Our inclusive classroom facilitates education in which all our students and teachers feel a high level of psychological safety.



Our Erasmian teaching

Our Erasmian teachers challenge themselves to use and develop up-to-date, effective, and evidence-informed approaches to teaching, learning and assessment of learning. On a programme level, didactical frameworks challenge students to translate their knowledge into a critical understanding of societal urgencies. The extensive pedagogical and didactical repertoire of our teachers allows them to provide an inclusive and safe learning environment in which all students can thrive and reach their full potential.

Erasmian teachers often work in teams. Teachers collaborate with mentors, tutors, coaches and/or learning innovators and other support staff, as well as societal partners. Teaching teams are responsive to the personal wellbeing of students, and they support students to develop resilience and self-regulatory professional and academic competencies as part of their academic, personal, and professional identity.

The Erasmian Classroom

We find on campus education essential, since it offers the best environment for engaging in one's academic, personal, and professional development. Academic education at Erasmus University combines 'traditional' classroom learning aimed at academic, personal, and professional development with innovative learning spaces where students can collaborate, experiment and design. For strategic purposes (for instance pre-master, professional/lifelong learners) and groups otherwise facing very significant hurdles coming to campus, hybrid and online learning environments support flexible learning pathways.

The way we organize our learning environments and facilities supports engaged learning. To strengthen the on campus learning experience, we make use of online and blended formats. With the help of digital and AI-technologies we enable students to apply their knowledge to contribute to a better understanding of complex societal urgencies. With formative feedback and use of digital resources, students are well informed about their development which supports them in taking important decisions for their learning pathways.