

An aerial photograph of Rotterdam, Netherlands, showing the city's harbor and the Erasmus Bridge. The bridge is a prominent red structure with two tall, curved pylons. The city is densely packed with buildings, and the harbor is filled with water and some boats. The sky is overcast with grey clouds.

Enhancing Societal Impact Through Impact-Driven Education

Agenda

1

Impact and effects of Impact-Driven Education (IDE) on 3 partners

2

Partnership accelerator model in developing an Impact-Driven Education

3

Example of an Impact-Driven Education course

4

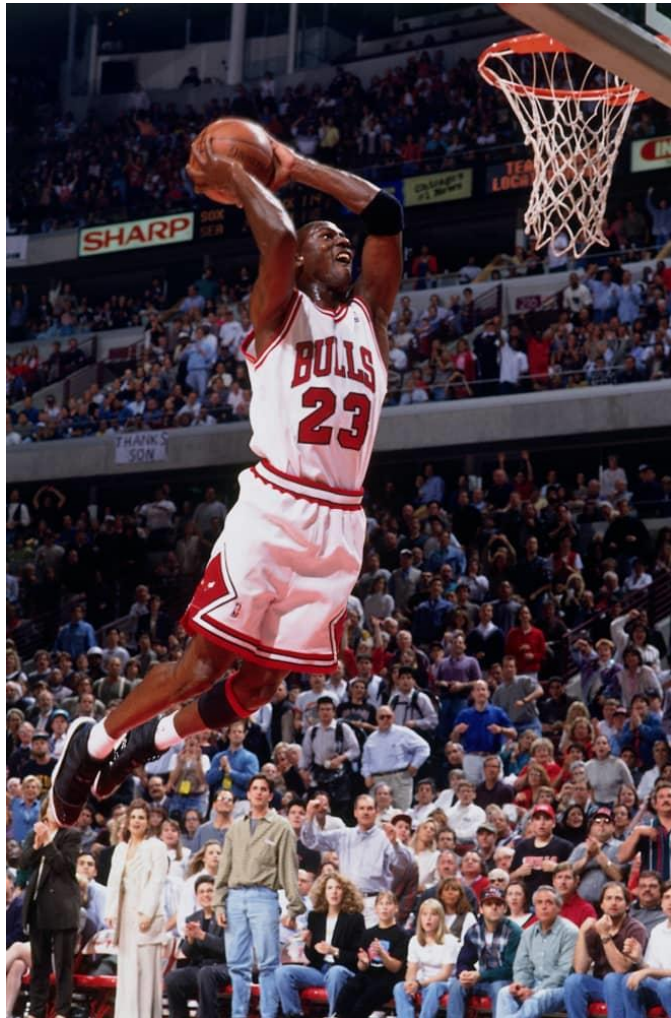
Relationship between IDE, IDGs and SDGs

5

Q&A Sessions

Conclusion: Narrative of a growth map for IDE

What is Impact?



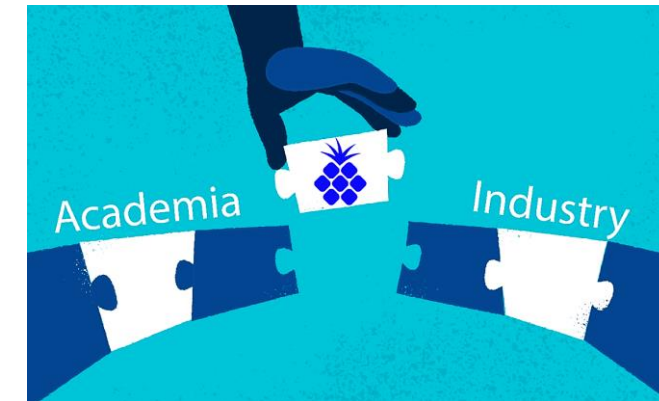
THE NOTORIOUS
SDGs

tackling 99 problems and poverty's number 1..

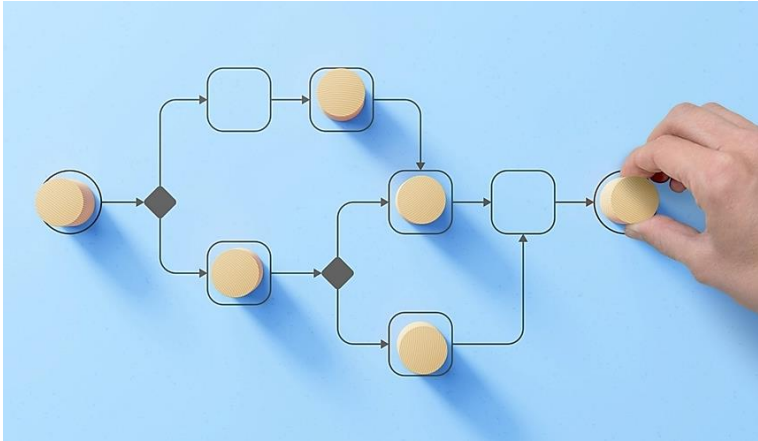
hashtag goals



Effects of an Impact-Driven Education on Three Partners

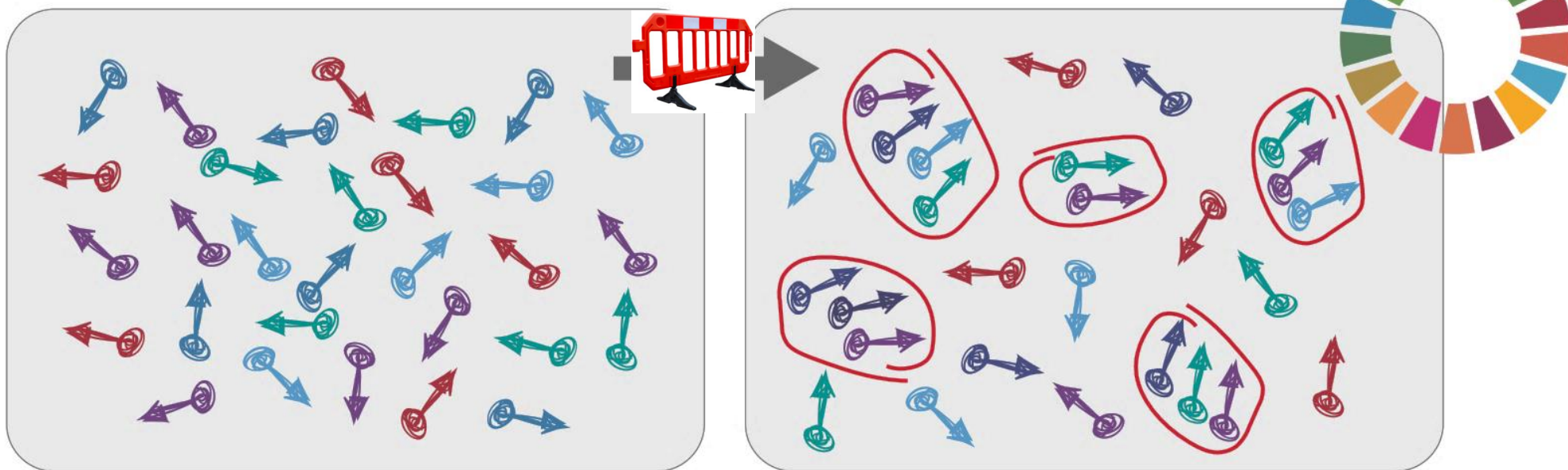


Barriers to Impact-Driven Education



Partnership Barrier between Business, Society and Environment

Moving towards partnering as the 'new normal'



Current situation: Little collaboration or coherence across business, government, civil society, academia, UN etc.

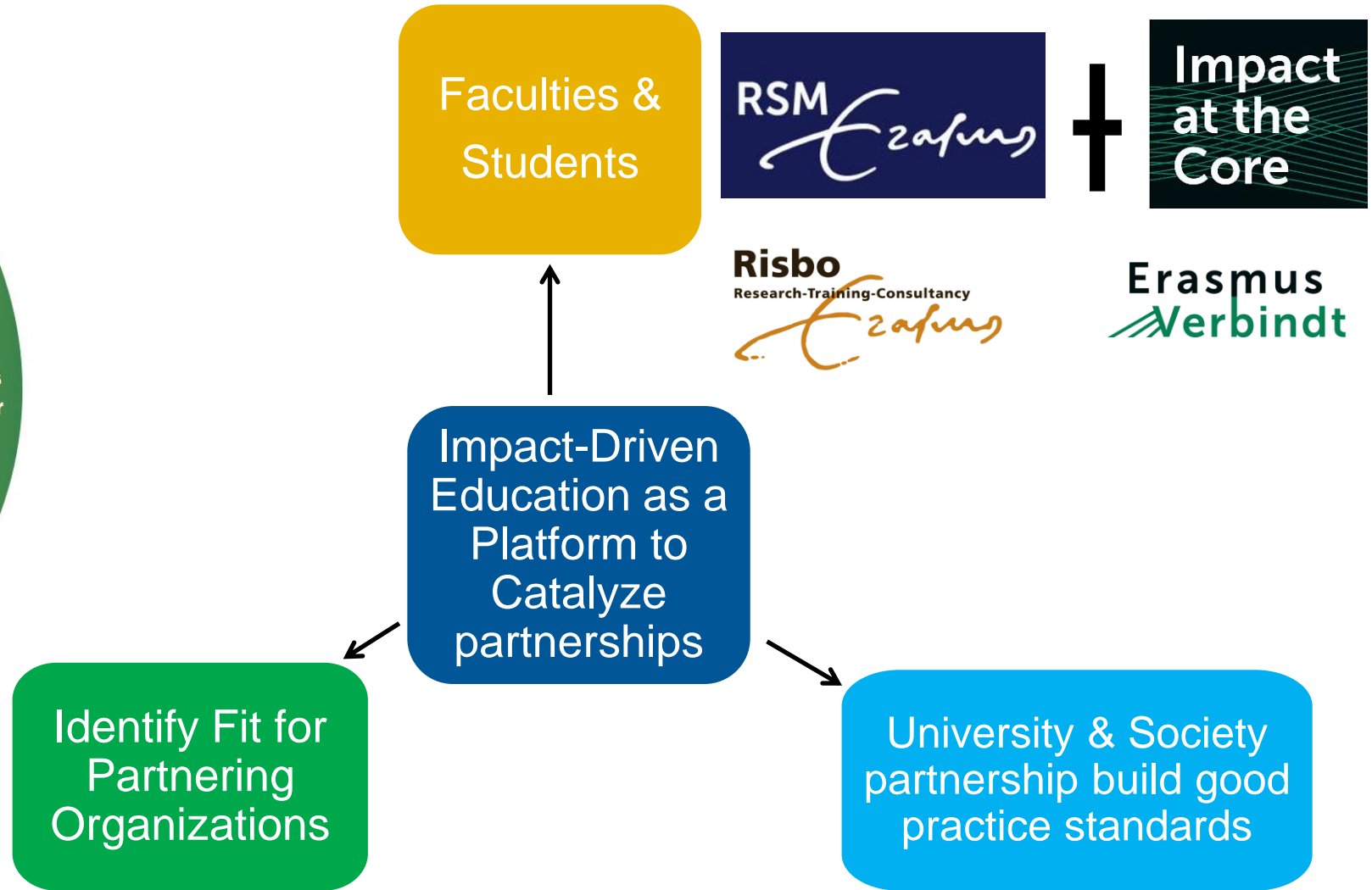
The New Normal: Systematic collaboration across societal sectors wherever value can be created towards the common goal / polar star of the SDGs

Credit: The SDG Partnership Guidebook, 2022

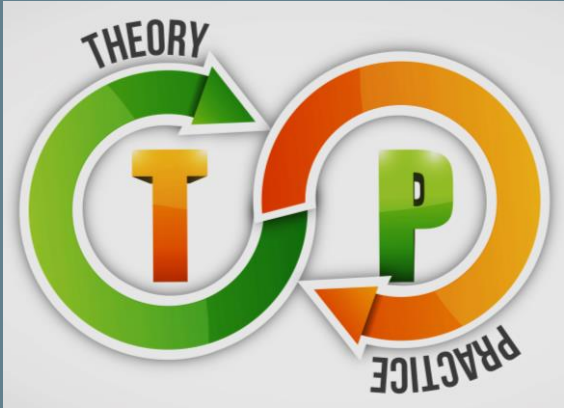
Partnership Accelerator – Partnership Enabling Eco-System



Credit: The SDG Partnership Guidebook, 2022



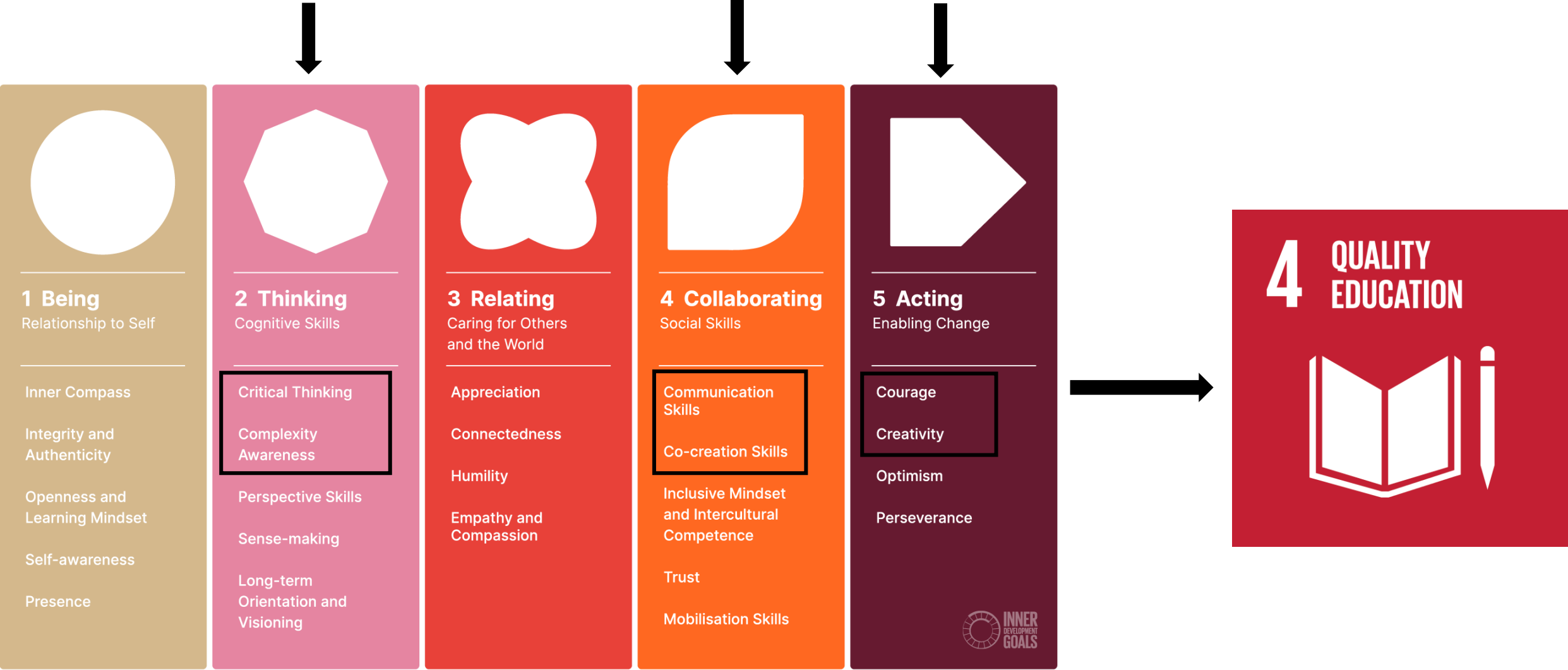
Objectives - Sustainable Business Models Elective Course



To develop self-employable competencies and leadership in creating impact-driven sustainable business models for organizations

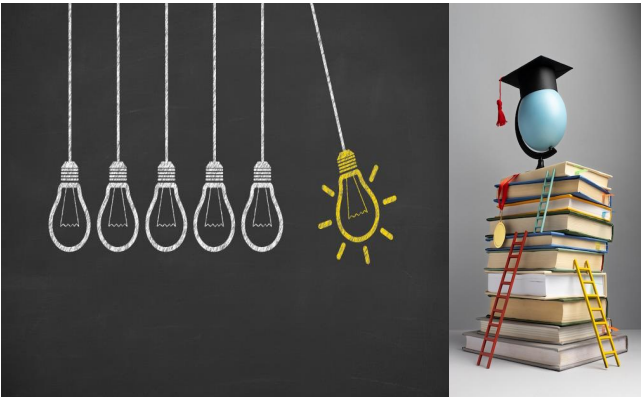
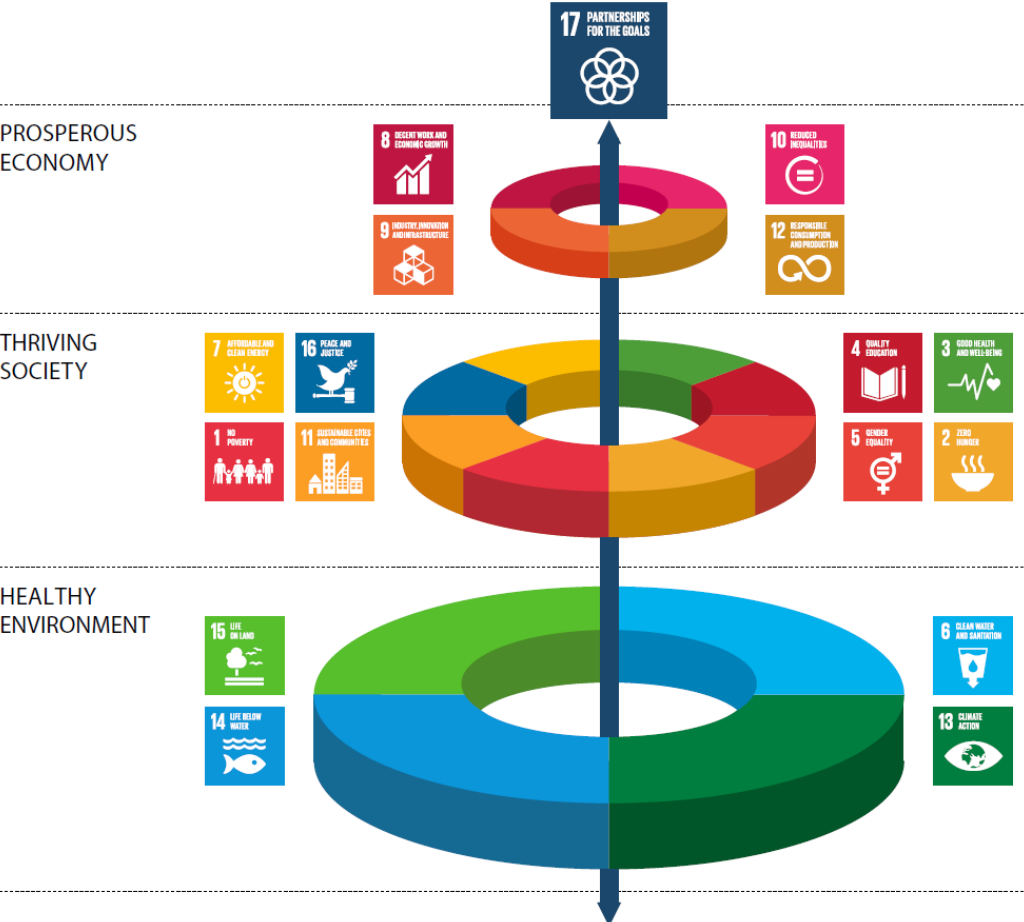


Inner Development Goals for Quality Education



Credit: <https://innerdevelopmentgoals.org/framework/>

Partnerships as an Essential Approach to Impact on SDGs



Q & A 1

Q & A 2

Conclusion 1: Growing Through Partnership for the SDGs



Comfort to Growth Zone Map

Conclusion 2: Poem

Thank you

alade@rsm.nl

www.rsm.nl

Burgemeester Oudlaan 50
3062 PA Rotterdam
The Netherlands

+31 10 408 2222
info@rsm.nl



a force for positive change

Accredited by



Poem: Impact-Driven Education

From single discipline to multi & trans-disciplinary

From isolated to co-creation and collaboration

From linear to circular economy

From unsustainable to sustainable

From corporate social responsibility to include student-led
responsibility.....

Tick Tock Ticks the Clock to the 2030 SDG Agenda

Are we walking the talk or having a walk in the park.....

Trust the process and the partners

Trust Failing Forward

Trust the Gen Z & Gen Alpha for impact during & after school

For a double impact to fast track our pace to the 2030 Agenda...

Trust Impact-Driven Education

It is a Safe Space for the Hummingbird to make a Brave Move

Playing our roles together towards a common goal.....

As we Embrace Impact-Driven Education for the SDGs

As we go through the mission to create positive social impact

We will grow to become a force for positive change in the world

And together we can make a difference.....

As we also keep in touch with the Dutch, we remind ourselves

Oh jongen jongen jongen.....

Samen zijn we als kaas en wijn—lekker als het smelt

Together we're like cheese and wine—delicious when it melts!

By Taslim Alade