

Erasmus
School of
Economics

Organisational Charts

Erasmus School of Economics

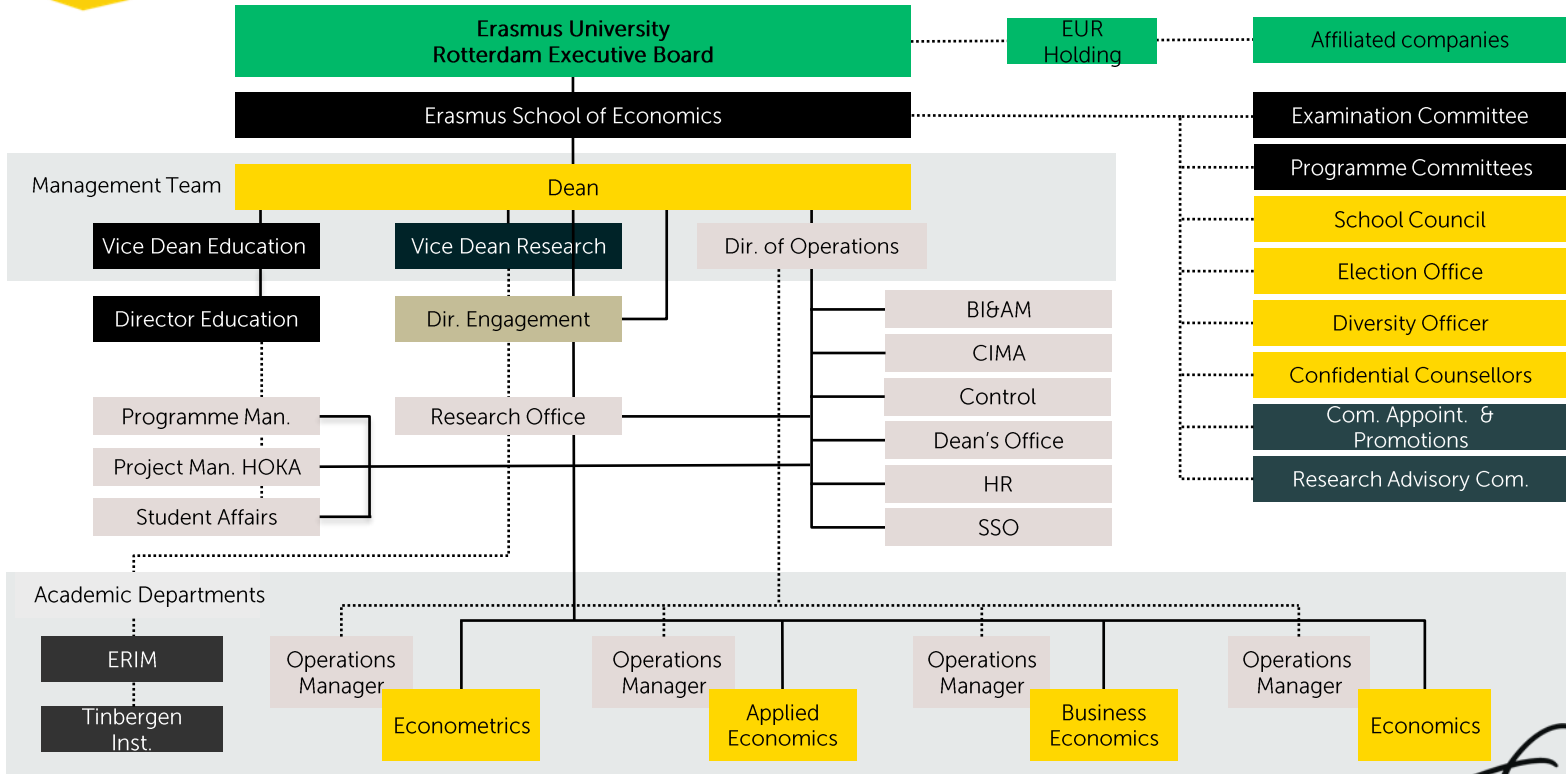
2025



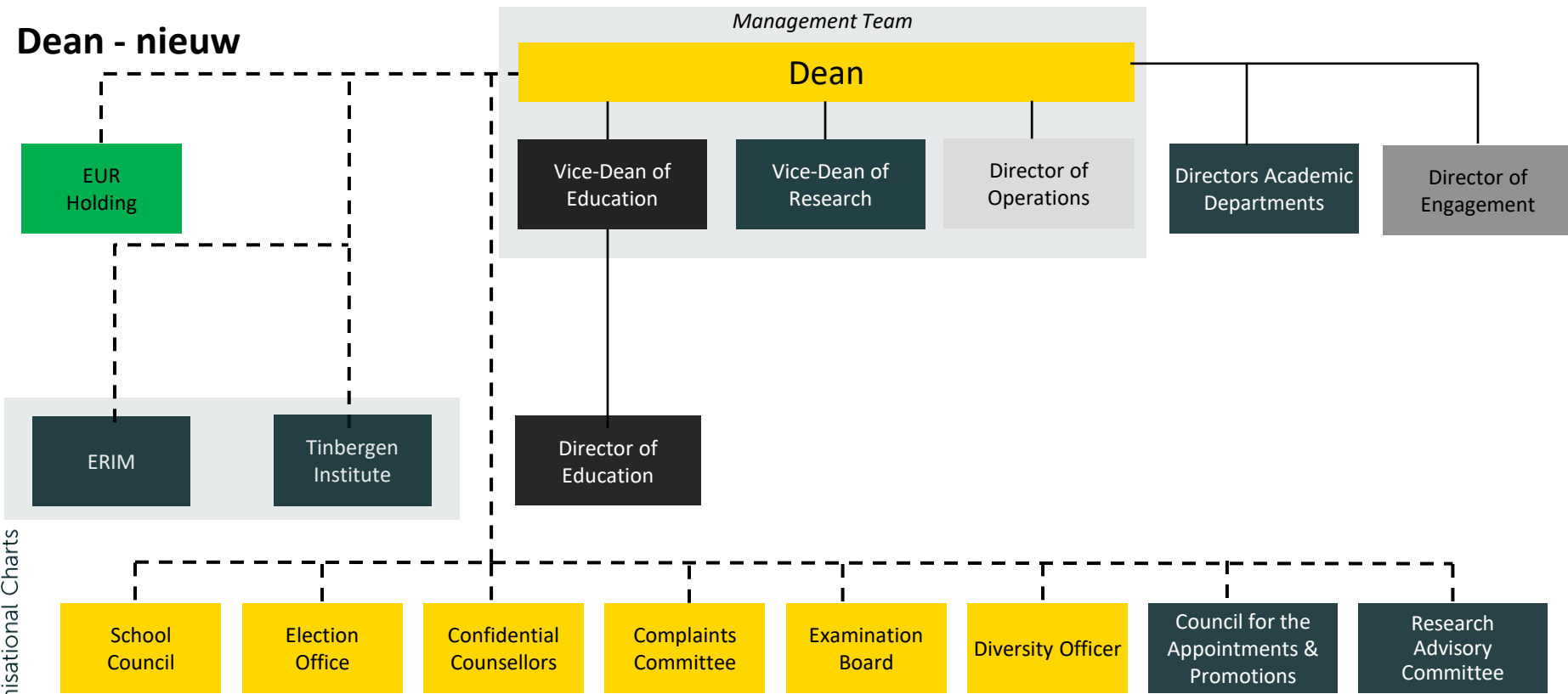
Erasmus University Rotterdam



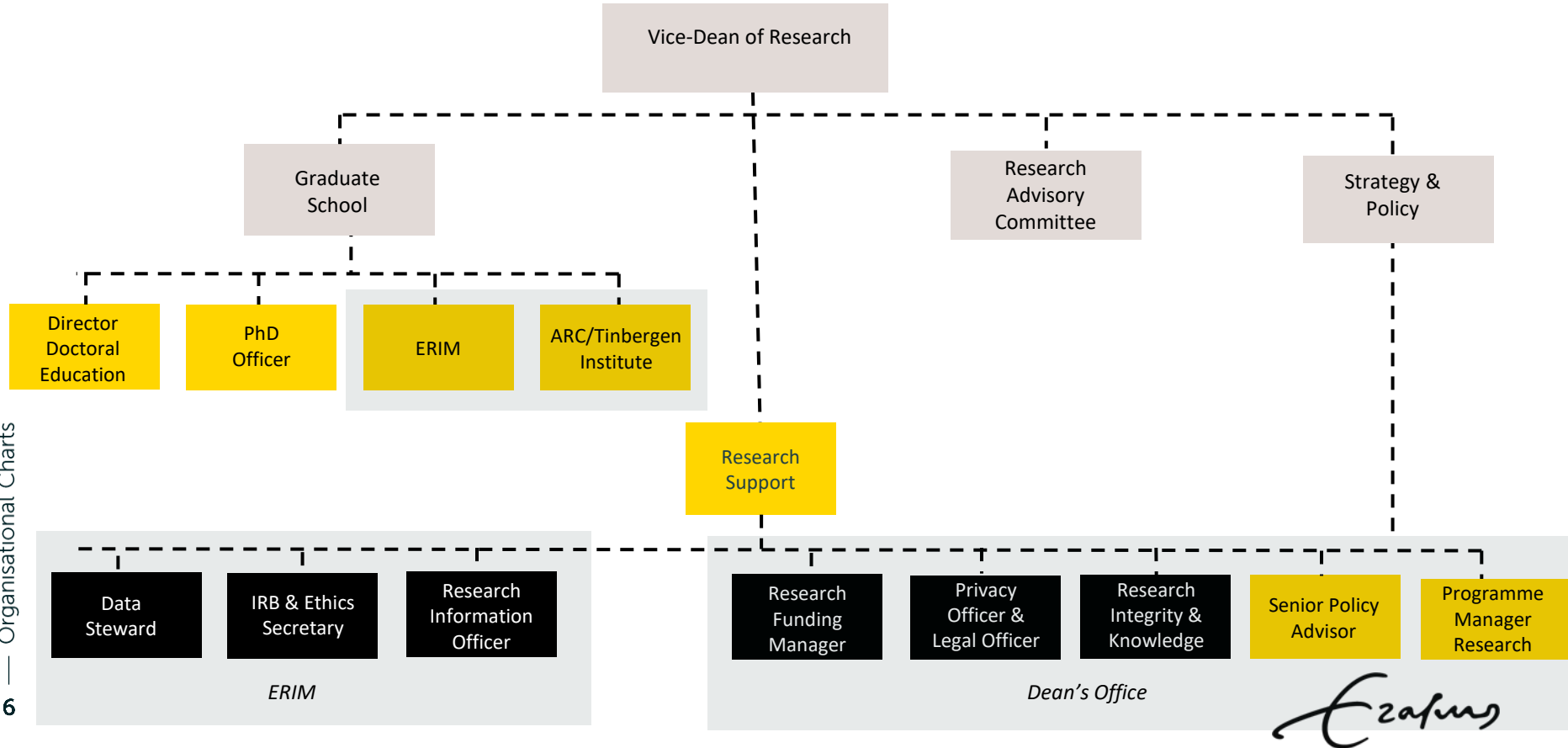
Organisational Chart



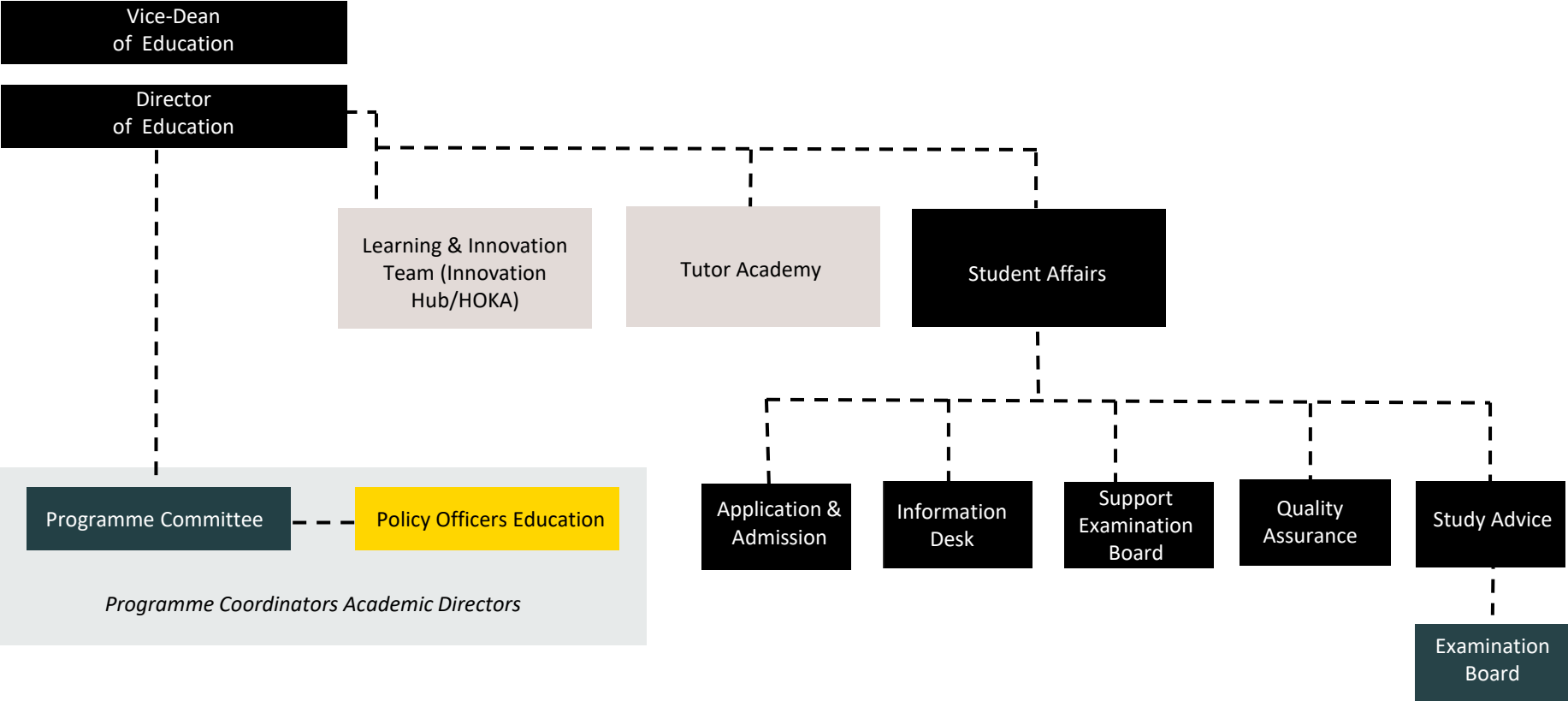
Dean - nieuw



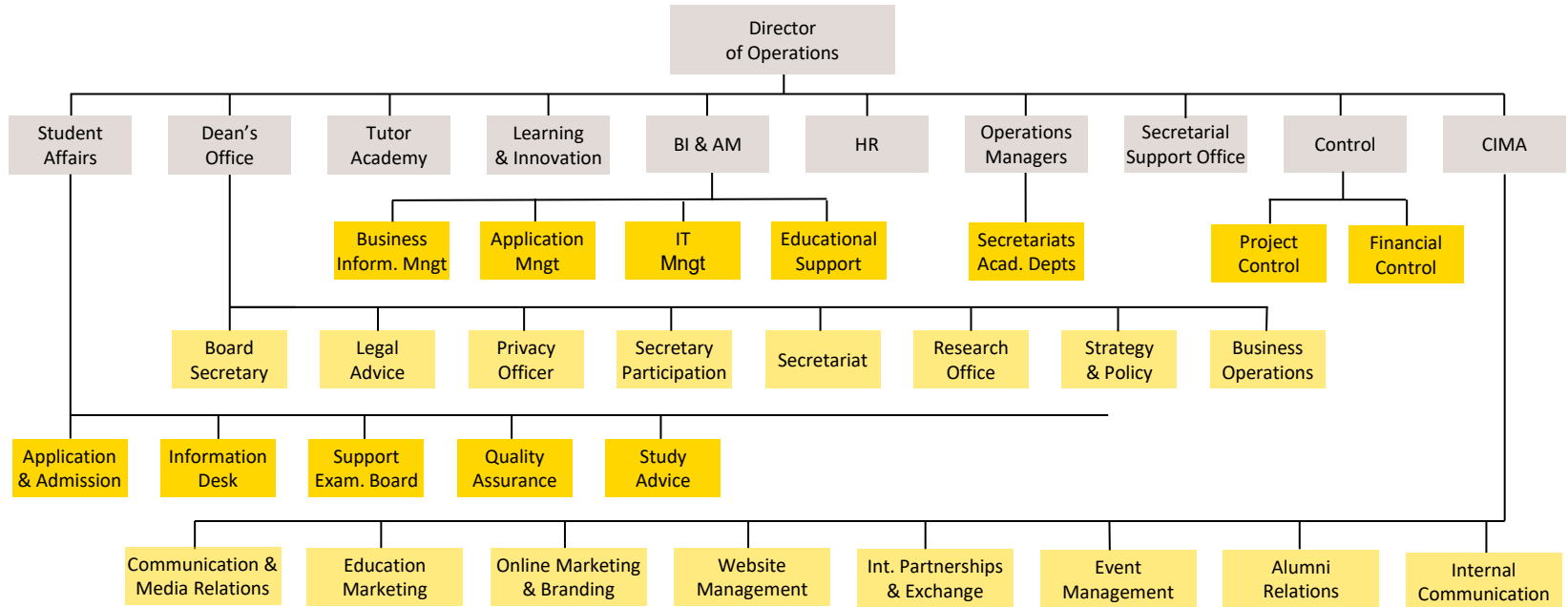
Erasmus School of Economics - Research - nieuw



Erasmus School of Economics – Education - nieuw

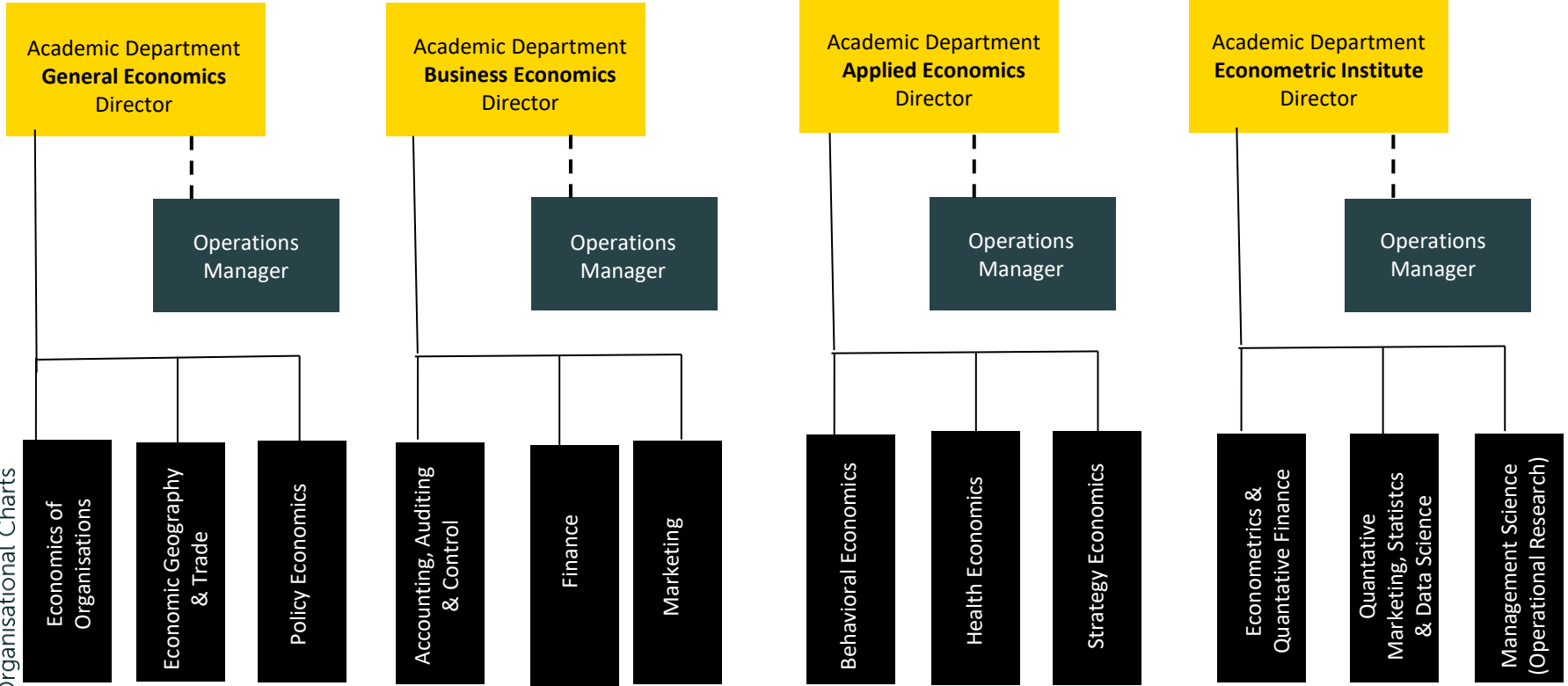


Erasmus School of Economics – Operations - nieuw



Erasmus School of Economics – Academic Departments - nieuw

Organisational Charts
7



Erasmus School of Economics – affiliated companies - nieuw

Erasmus University
Rotterdam
Executive Board

Dean
Erasmus School
of Economics

EUR HOLDING

Erasmus
Centre for
Urban, Port and
Transport
Economics BV
(UPT)

Erasmus
Q-Intelligence BV
(EQI)

EURAC BV
(ESAA)

Fiscaal
Economisch
Instituut BV
(FEI)

SEOR BV

Institute
for Housing and
Urban
Development
Studies BV (IHS)
(50%)

Erasmus
Fiscale Studies
BV
(50%)