



UpdaTE >July 2020

This bulletin aims to supply all employees of the department Applied Economics with relevant information. We will keep you up to date on procedures, interesting information and events. If you have any questions or comments, or if you would like to post information, please contact Manuela (ettekoven@ese.eur.nl).

UpdaTE also on the intranet

From now on you can also find our newsletter (UpdaTE) on the website. Click [here](#) to go to the website.

Publications/interviews of our colleagues

Please let Manuela know when you have a new publication, interview or something else you want to share with your colleagues.

- Potrafke, N., **Rösch, M.**, & Ursprung, H. (2020). Election systems, the “beauty premium” in politics, and the beauty of dissent. *European Journal of Political Economy*, 101900. <https://doi.org/10.1016/j.ejpoleco.2020.101900>
- Fichera, E. and **S von Hinke**. *in press*. The Response to Nutritional Labels: Evidence from a Quasi-Experiment. *Journal of Health Economics* <https://www.sciencedirect.com/science/article/pii/S016762961930089X>
- **Zee, Sophie van der**, Interview Radio 1 (BE), Killer Expert turns out to be a serial liar <https://www.eur.nl/en/ese/news/serial-killer-expert-turns-out-be-serial-liar>
- **Karreman, Wang and Van Oort, (2020)** Door leenstelsel kiezen havisten vaker studie met hoog verwacht salaris, *Economisch Statistische Berichten*. Click [here](#) for Pdf. <https://esb.nu/esb/20060197/door-leenstelsel-kiezen-havisten-vaker-studie-met-hoog-verwacht-salaris>.
- **Wang, Zhiling** (2020). The incompatibility of local economic prosperity and migrants' social integration: evidence from the Netherlands, *The Annals of Regional Science*. <https://link.springer.com/article/10.1007/s00168-019-00953-8>

For more media appearances of our colleagues in the media click [here](#)

Will you be working on campus again? Then this information concerns you!



Do you work on a device that you chose or bought yourself (so not on an EUR-workplace)? Then the way you login to a number of applications changes when you return to working on campus.

From 15 June, you will work on your self-purchased or chosen device on campus in the same way as you are used to at home. This means that you can only open some applications with your own device if you use MyApps (Remote Desktop). These include:

- Bizzdesign
- Docsys
- Ellis
- Outpost BI
- Power BI Reporting
- Access DirectTrackEUR

If you have any questions please contact the Service Desk at servicedesk@eur.nl of (010) 408 8880.

Tim Benning receives CLI Fellowship



Tim Benning, member of the Academic Skills team and the Tutor Academy, is the first teacher of Erasmus School of Economics, who receives a Community for Learning & Innovation (CLI) fellowship. This fellowship finances 0.2 FTE of a project which focuses on strengthening or innovating education.

[Read more](#)

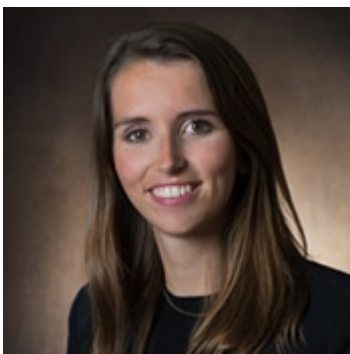
Journal of Economic Theory selects paper of Peter Wakker as one of 50 most prominent papers



As part of its 50th anniversary, the Journal of Economic Theory presents a special issue that includes the 50 most influential papers the journal has published over the years. One of these selected papers is An index of loss aversion, written by Peter Wakker, Professor of Decisions under Uncertainty at Erasmus School of Economics, together with Veronika Köbberling.

[Read more](#)

Interview: PhD student initiates global study on the impact of COVID-19 measures



How do people respond to the measures that countries are taking to combat COVID-19? And what impacts their compliance with said measures? To answer these questions, Erasmus University Rotterdam initiated a research project to study people's behaviour and perception towards governments' approaches on a global scale.

[Read more](#)

Government's corona crisis policy handles uncertainty well



Aurélien Baillon, Professor of Economics of Uncertainty at Erasmus School of Economics, believes that the government deserves more than a passing grade when evaluating the corona crisis policy.

[Read more](#)

Agenda

- 12 February 2021: Inaugural lecture Hans van Kippersluis

Defense dates

-

Upcoming holidays 2019

Upcoming national holidays on which the EUR is closed:

- Friday 25 December – Christmas Day
- Saturday 26 December - Christmas Boxing Day
- Friday 1 January 2021 – New Year's Day

Please note that EUR is closed from Monday 28 December 2020 until Friday 1 January 2021.

New colleagues



As of 1 September 2020, we will welcome **Georg Granic**. Most of us already know Georg. He stayed at the University of Antwerp for a year and is now coming back for 4 year to do research on the Vidi of Jan Stoop.



The Erasmus logo, featuring the word "Erasmus" in a stylized, cursive script.

2017 Erasmus School of Economics | [disclaimer](#)